

Software wheasy 4

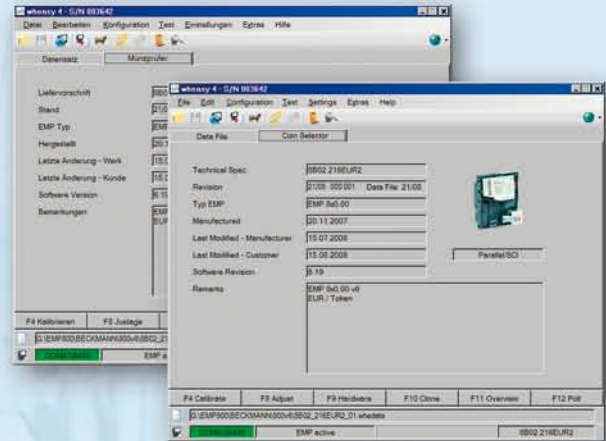
for Windows 2000™, XP™ and Windows 7™

for all electronic coin selectors
EMP 800 from version v6 onwards

cloning and calibration function

firmware update

hardware test routine



wheasy 4

wheasy 4 is a user friendly Windows™ software for testing and programming our electronic coin selectors. The existing settings of the coin selector may be read, changed and tested by means of a standard PC.

The scope of delivery of wheasy 4 includes wheasy 3 for all electronic coin selectors EMP 500, 770, 780, 800 and 900 from version v3 onwards.

Software whpocket 4

for Windows Mobile™ (from 5.0 onwards)

for all electronic coin selectors
EMP 800 version v6



whpocket 4

whpocket 4 is the solution for programming on site. A mobile device loaded with this self-explanatory software enables simple and efficient coin or currency reprogramming.

wheasy 4 – professional service software

Main features at a glance

Test: The command "Autopoll" allows to easily check the coin processing. Additional inbuilt test functions enable thorough testing of overall operation of the coin selector before use.

Cloning Function (programming without coins): Programming new coins or currencies. With the cloning function, data sets received via internet from wh Münzprüfer are transferred directly to the coin selector. Furthermore once a new setting for "new" coins or tokens has been established, the program may be transferred to other coin selectors via the cloning function.

Firmware Update: New processor software can be loaded into the coin selector via this feature.

Scope of delivery

wheasy 4 is supplied with an interface converter and all cables to connect the coin selector to the power supply N 780 and the USB interface of your computer. The voltage supply for the coin selectors is provided via the power supply N 780.

whpocket 4 – mobile programming software

Main features at a glance

Automatic identification of the coin selector: The coin selector is automatically identified by the software - model and configuration are displayed.

Cloning Function (Programming without coins): Programming of new coins or currencies. Data sets are transferred directly to the coin selector. Actual data sets are available in the download area of our homepage. Selective cloning allows reprogramming of individual coins or tokens.

Firmware update: Using this function the firmware of the coin selector can be updated. Flash data sets are available via internet.

Test Function: A special feature for the overall testing of coin selector functions such as DIP switches, solenoids, light barriers and coin outputs.

Scope of delivery

Software whpocket 4, dongle und cable to connect the coin selector.

Windows ist eingetragenes Warenzeichen der Microsoft Corporation.
Windows is a registered trademark of Microsoft Corporation.

Distributed by
Hemisphere west Europe Ltd

Ty Bryneirin
Sarnau,

Llandysul
Ceredigion

SA44 6QR
UK

Tel: +44 (0) 1239 654157

Fax: +44 (0) 1239 654742

e-mail: sales@hwieurope.com

Web: www.hwiglobal.com

HWe
Hemisphere West Europe
UNATTENDED PAYMENT SPECIALISTS